

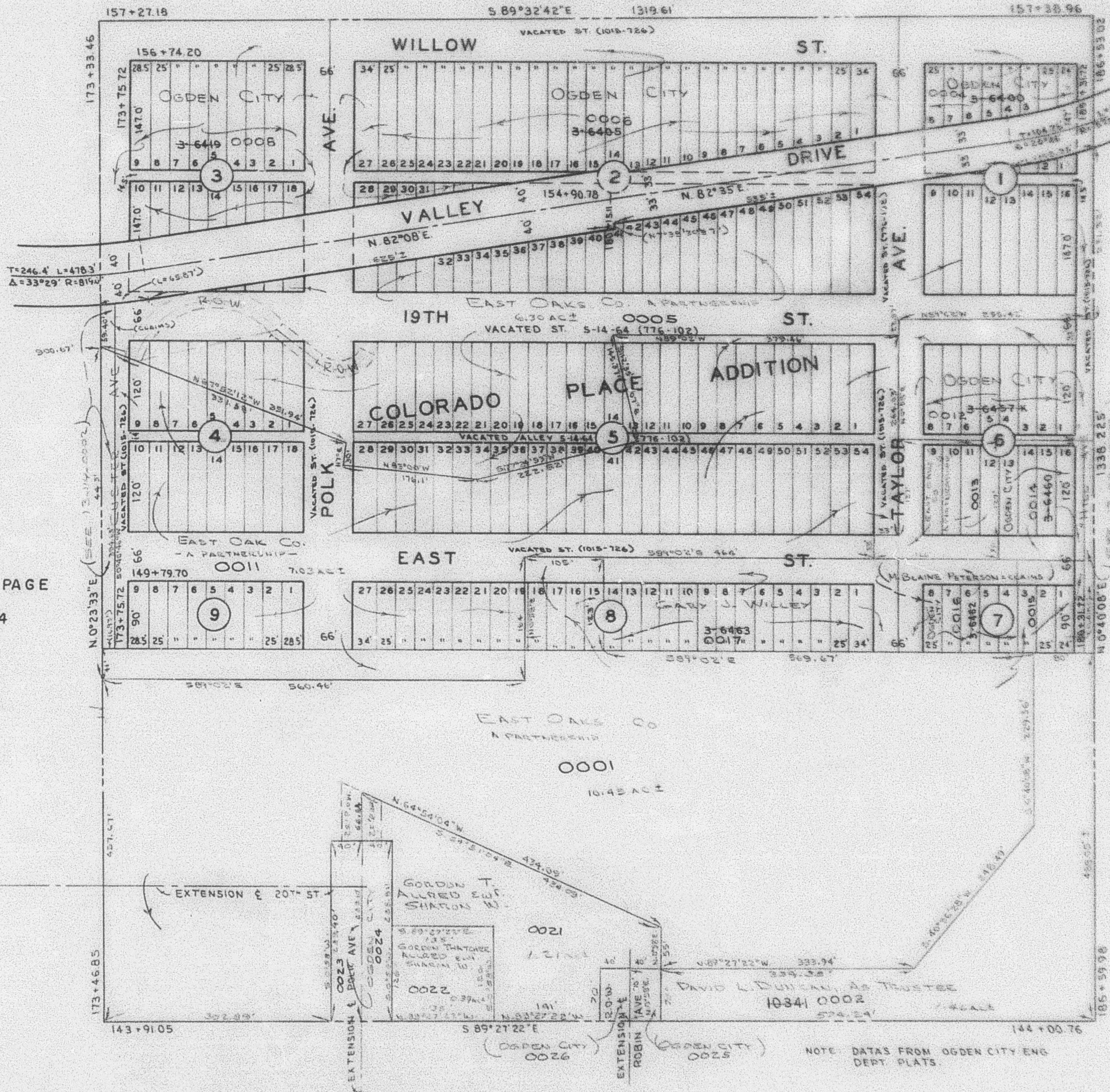
N.E. 1/4 OF NW. 1/4
SECTION 27, T. 6N., R. 1 W., S.L.B.&M.

TAXING UNIT: 25

COLORADO PLACE ADDITION
IN OGDEN CITY

PREFIX: 13-113

SCALE 1"=100' SEE PAGE 72



SEE PAGE 80

SEE PAGE 114